

Route Map



Location Advantage

10 Mins from Mohanlalganj	15 Mins from Outer Ring Road	15 Mins from Vrindavan Yojna
15 Mins from PGI	25 Mins from Medanta Hospital	25 Mins from Lulu Mall, Ansal API
30 Mins from Hazaratganj	30 Mins from Charbagh	30 Mins from Amausi Airport

Bank Collection Account Details

Account Name :- AARYAVISION VENTURES PVT LTD-COLL A/C-ARSH ENCLAVE
 Account Number :- 43376958239 | Bank Name :- STATE BANK OF INDIA | IFSC Code :- SBIN0004166



www.arshenclave.com +91-8172808080

Site Add: MDR 91-C, Jabrauli Mohanlalganj, Near Shivgarh Resort, Lucknow

Office Add : 201A, Felix Square Sushant Golf City Lucknow-226030

RERA REGISTERED



Rera No. - UPRERAPRJ259362/01/2025
 Website - www.up-rera.in



Where Visionary Design
 MEETS LUXURY LIVING



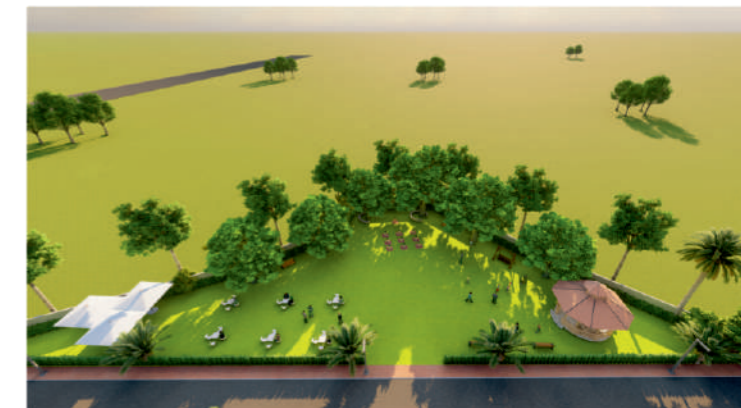
www.arshenclave.com

ABOUT US

Welcome to Arsh Enclave, an exclusive residential development that redefines modern living. Positioned at the intersection of comfort, style, and convenience, Arsh Enclave is more than just a project, it's a community designed for those who aspire to live with distinction.

With a focus on innovative architecture, functional layouts, and premium amenities, Arsh Enclave offers an unparalleled living experience that combines contemporary elegance with the warmth of a family-friendly environment. Every detail, from the expansive green spaces to the thoughtfully curated interiors, reflects our commitment to providing a perfect setting for a fulfilling lifestyle.

Discover a space that complements your aspirations and meets the diverse needs of today's dynamic urban families. Arsh Enclave is where luxury, serenity, and connectivity come together seamlessly, creating a home that's truly a cut above the rest.

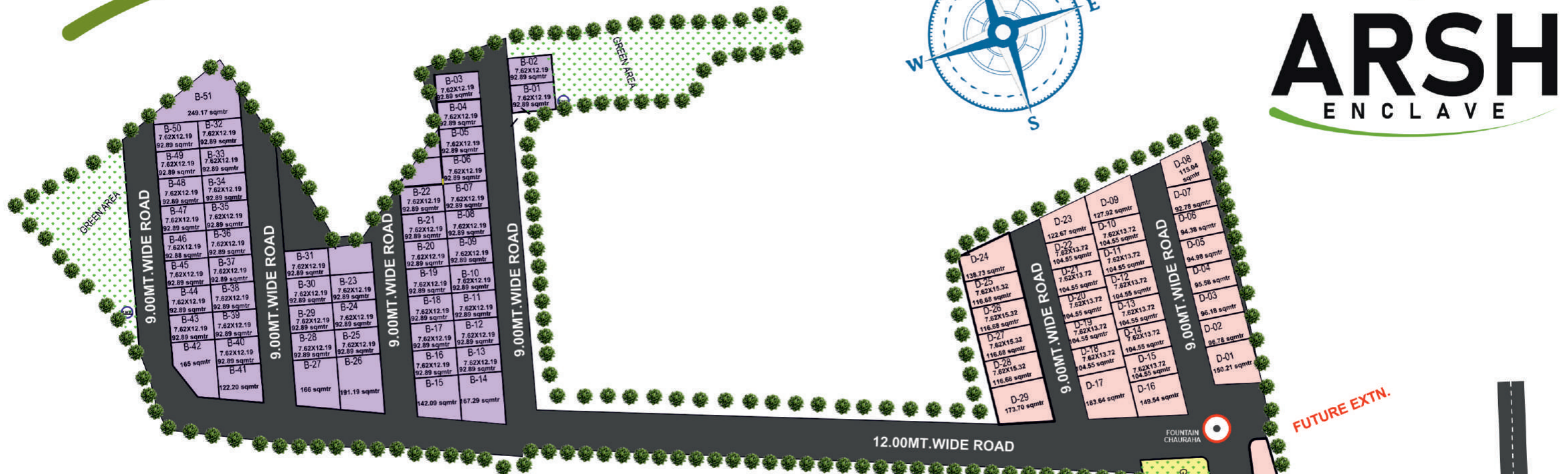


MASTER PLAN



ARSH

ENCLAVE



Gated Township



Wide Road



Kids play area & green belt



Street Lights



Modern sewer and drainage system



Commercial Area



Land for hospital



Land for school



Green park with jogging track



CCTV



Temple



24x7 Security



Madapur Mandir

www.arshenclave.com

Site Add: MDR 91-C, Jabrauli Mohanlalganj,
Near Shivgarh Resort, Lucknow

High Class Amenity

FOR ELEVATED EVERYDAY LIVING

- 3 TIER SECURITY
- JOGGING TRACK
- MANGO PARK
- KIDS PLAY AREA
- STREET ROAD LIGHT
- 40/30 FT WIDE ROADS
- DRAINAGE SYSTEM
- ELECTRICITY
- TEMPLE
- YOGA SPACE
- SEWER LINE
- GAZEBO/ PERGOLA

